



ELM TREE NEWSLETTER



April Edition

BIRTHDAY'S WE ARE CELEBRATED IN APRIL

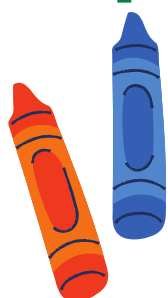


Jacob W turned 9
Charlie M turned 10
Theo G turned 10
Jamie S turned 10
Phoebe C turned 7
Mayson F turned 10
Cohen H turned 10
Jaydan P turned 11
Alex H turned 9
Kai M turned 8
Shenice turned 11
Bradley C turned 11
Freya E turned 9
Kyro J turned 7
Reuben J turned 11
Joshua C turned 11
Craig S turned 9

REMEMBER!

1st May and 8th May are Bank Holiday's school will be closed

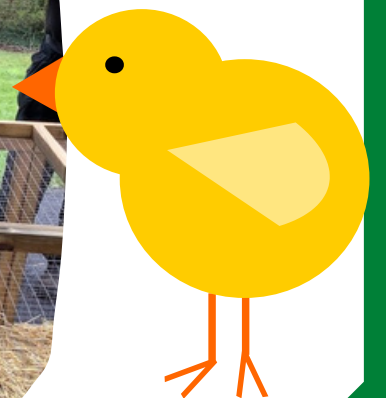
Full School Attendance

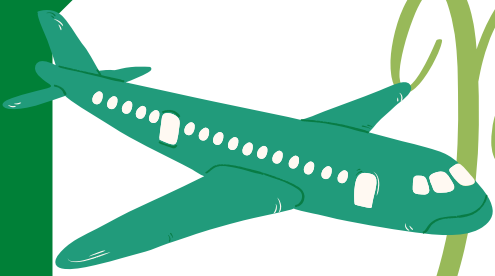


90.4%



Easter Community Day





Paris trip



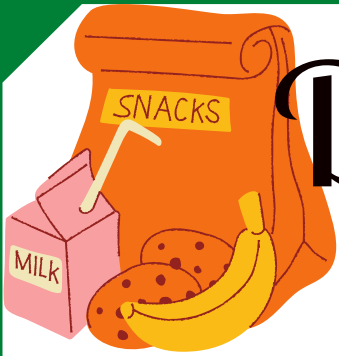
Payment needs to be fully made by 23rd June 2023. Please ensure form 3b's and medical forms have been completed. If you require any support please contact school



Centre Parcs



Please ensure you are completing paperwork for Centre Parcs. We are still awaiting a few deposits. If you require any support please contact school



Dinner Money



School Dinners are £2.20 per day.
£11 for a full week. Please ensure
you are checking the school money
app for any outstanding school
dinner payments. Any questions
please contact school office

School Transport

Just a little reminder that children
need to be ready for the school
bus/taxi in the morning. The bus is
only able to wait 5 minutes.

Any questions please contact school
office

